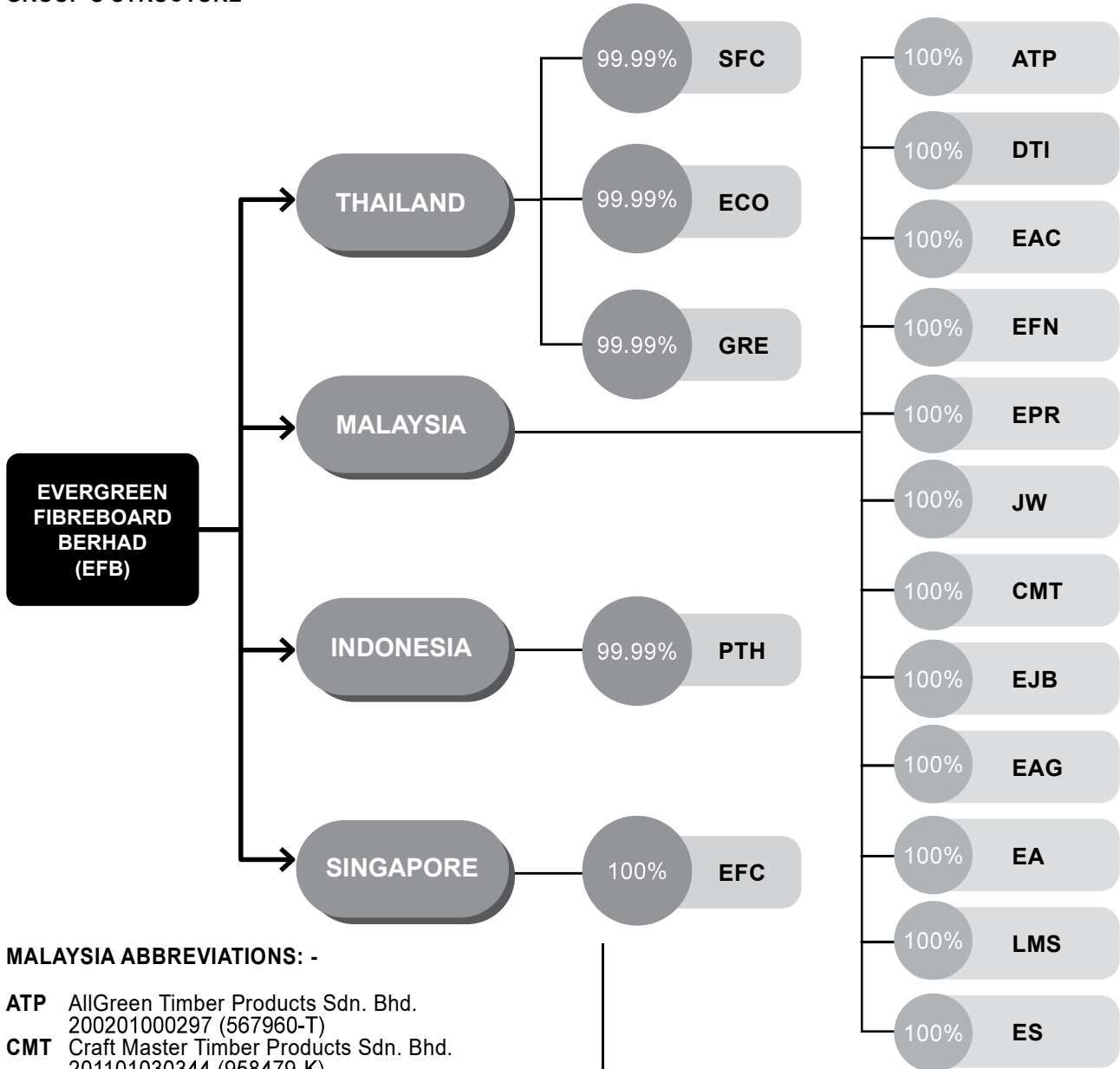


GROUP'S STRUCTURE



MALAYSIA ABBREVIATIONS: -

- ATP** AllGreen Timber Products Sdn. Bhd.
200201000297 (567960-T)
- CMT** Craft Master Timber Products Sdn. Bhd.
201101030344 (958479-K)
- DTI** Dawa Timber Industries (M) Sdn. Bhd.
197701001829 (32799-M)
- EFB** Evergreen Fibreboard Berhad
199101006810 (217120-W)
- EJB** Evergreen Fibreboard (JB) Sdn. Bhd.
200601031905 (751664-M)
- EAC** Evergreen Adhesive & Chemicals Sdn. Bhd.
200601037899 (757659-T)
- EAG** Evergreen Adhesive & Chemicals (Gurun) Sdn. Bhd.
201001024885 (908762-W)
- EFN** Evergreen Fibreboard (Nilai) Sdn. Bhd.
200801020800 (822113-U)
- EA** Evergreen Agro Sdn. Bhd.
201101013873 (942013-D)
- EPR** Evergreen Plantation Resources Sdn. Bhd.
201001042861 (926789-W)
- LMS** Locomotion Services Sdn. Bhd.
201101024229 (952365-P)
- JW** Jasa Wibawa Sdn. Bhd.
199801005018 (461145-D)
- ELS** Everlatt Sourcing Sdn. Bhd.
201501006212 (1131544-K)

THAILAND ABBREVIATIONS:-

- ECO** ECO Generation Co., Ltd.
(0905549001332)
- GRE** GRE Energy Co., Ltd.
(0905549001341)
- SFC** Siam Fibreboard Co., Ltd.
(0105547007195)

INDONESIA ABBREVIATIONS:-

- PTH** PT Hijau Lestari Raya Fibreboard.
(8120015061789)

SINGAPORE ABBREVIATIONS:-

- EFC** Evergreen Furniture Co. Pte. Ltd.
(202015969N)